

CRYSTAL BAY

BEING A REPLAT OF TRACT A OF THE POLO CLUB EQUESTRIAN CENTER
 PART OF THE POLO CLUB P.U.D. AS RECORDED IN PLAT BOOK 61,
 PAGE 166 OF THE PUBLIC RECORDS OF PALM BEACH COUNTY, FLORIDA.
 IN PART OF SECTION 27, TOWNSHIP 46 SOUTH, RANGE 42 EAST
 PALM BEACH COUNTY, FLORIDA
 SHEET NO. 4 OF 5

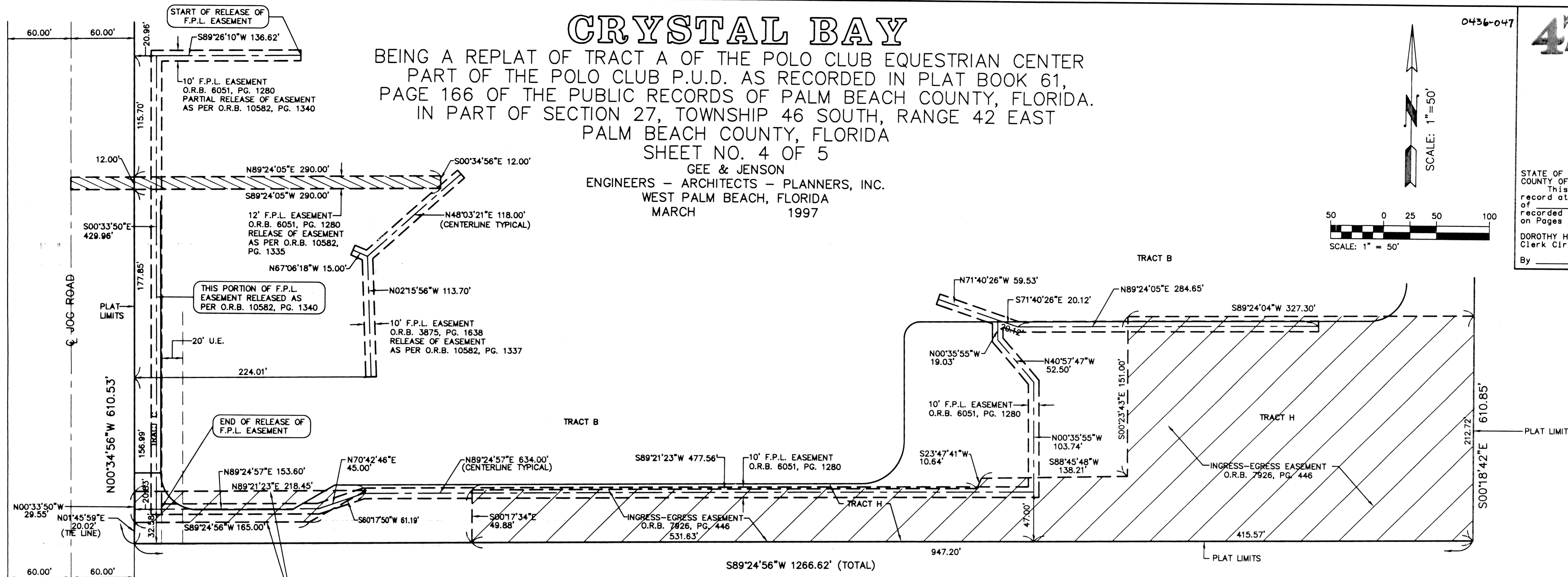
GEE & JENSON
 ENGINEERS - ARCHITECTS - PLANNERS, INC.
 WEST PALM BEACH, FLORIDA
 MARCH 1997

0436-047

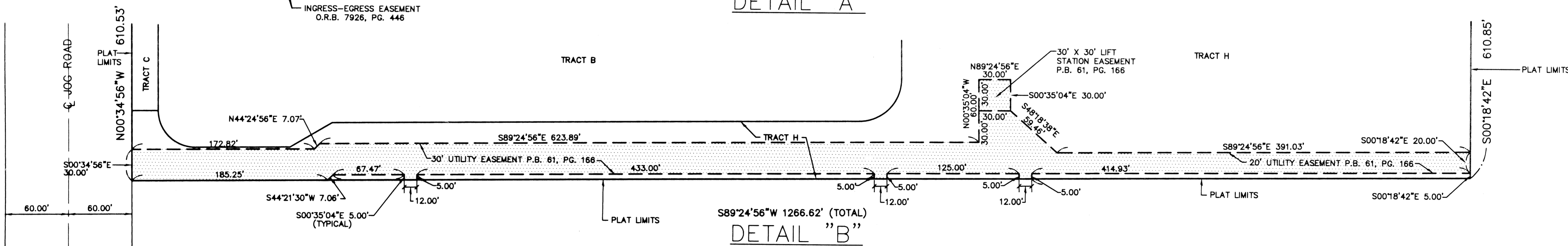
47



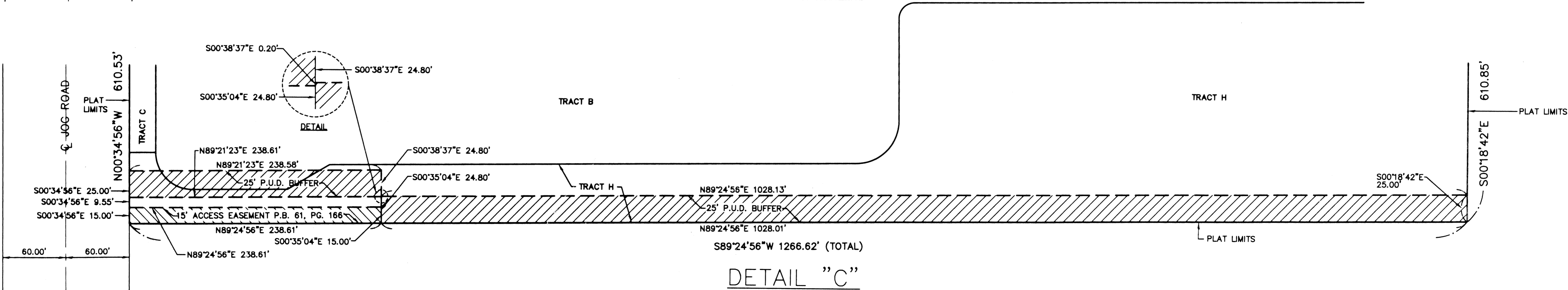
STATE OF FLORIDA
 COUNTY OF PALM BEACH
 This plat was filed for
 record at _____ M this day
 of _____ 1998, and duly
 recorded in Plat Book No. _____
 on Pages _____ thru _____
 DOROTHY H. WILKEN
 Clerk Circuit Court
 By _____ D. C.



DETAIL "A"



DETAIL "B"



DETAIL "C"

SUBDIVISION Crystal Bay
 BOOK 47
 PLAT MAP # 215A
 FILED MAR 31 1998
 ZIP CODE 33496
 TAG 9107
 PUB NAME Polo Club

COMPUTED M. HORAN
 DRAWN M. HORAN
 CHECKED _____
 APPROVED _____
 JOB NO. 95-238

THIS INSTRUMENT PREPARED BY:
 JAMES A. DAVIS, PSM
 FOR GEE & JENSON, ENGINEERS - ARCHITECTS - PLANNERS, INC.
 (FLORIDA CERTIFICATE OF AUTHORIZATION NUMBER LB2934)
 ONE HARVARD CIRCLE
 WEST PALM BEACH, FLORIDA 33409-1923